

PAOLI SOCKETS



The new Paoli sockets are an unprecedented product and the result of a long and complex engineering research. The continuous consultation with many customers such as **ORECA** THE MOTORSPORT COMPANY, **NASCAR** and many others has meant that the technological development of Paoli sockets went hand in hand with the real needs of the teams in terms of **VERSATILITY, SAFETY, MATERIALS** and **MAINTENANCE**.

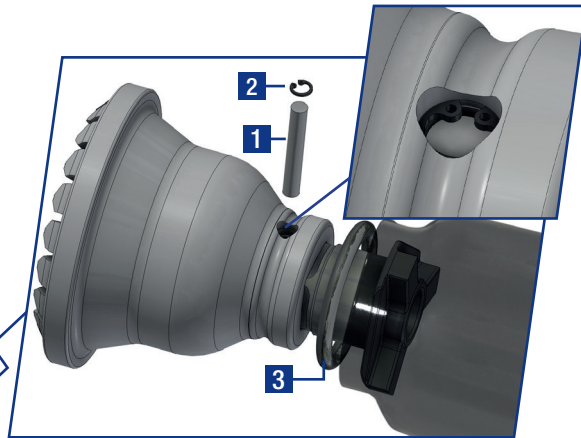
- Three different materials: titanium, special steel and aerospace aluminium. The first and the second are suitable for the race application, the third one is suitable for non-intensive use and torque wrench.
- Innovative design, attractive shapes and aesthetically pleasing.
- Accuracy in fitting the socket to the square drive, perfect clearance that allows the socket to be assembled and disassembled just by hand.
- Innovative safety system to insert the pin through the socket/square drive hole:
 - Unbalance of the center of the pin on the side of the blind hole
 - Elastic ring to prevent pin ejection
 - Cover O-ring

Maximum safety, assembly precision and reduced assembly times.

- Insertion of service holes for maintenance of magnets: replacing magnets is quick and easy, with a simple plug-locator.
- Internal 'O' ring retaining nut made from new Paoli Sockets material. The customized resin gives the socket an ideal grip with its high gripping power.
- The Paoli Sockets Service Kit for the maintenance and replacement of worn parts contains everything needed to work on the socket simply and safely. A brief instruction manual indicates the optimum way to carry out operations (E.g. replacement and subsequent refinement of magnets).

INTERNAL 'O' RING RETAINING NUT ESPECIALLY MADE FOR PAOLI SOCKETS.

REPLACING MAGNETS IS QUICK AND EASY THANKS TO REAR SERVICE HOLES.



INNOVATIVE SAFETY SYSTEM

- 1 Insert the locking pin in transverse hole of the wheel nut socket.
- 2 Place the elastic ring for bore in the seat formed in the hole where the locking pin was positioned, to prevent it from escaping.
- 3 Place the retaining O-ring in the housing on the collar of the wheel nut socket.

ALSO AVAILABLE IN AEROSPACE ALUMINIUM, SUITABLE FOR TORQUE WRENCH APPLICATIONS.

ACCURACY IN FITTING THE SOCKET TO THE WRENCH (MINIMAL CLEARANCE).

INNOVATIVE DESIGN, ATTRACTIVE SHAPES AND AESTHETICALLY PLEASING.



Operating and Maintenance Manual



WWW.PAOLI.NET | SALES@PAOLI.NET | +39.0522.364511

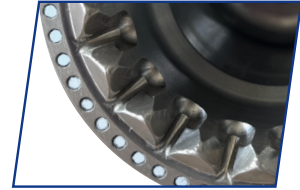
"GHOST MAGNETS" TECHNOLOGY

Designed for the **PORSCHE 992 GT3 R**, the wheel socket with "ghost magnets" technology features Paoli's patented Spline system and an innovative retention system for the center lock nuts.

The magnets are fully surrounded and protected during use. It's an advanced technology also used in wheel sockets **developed for NASCAR** and **BMW M4 GT3**.

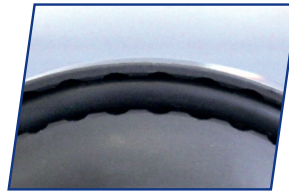


GHOST MAGNETS

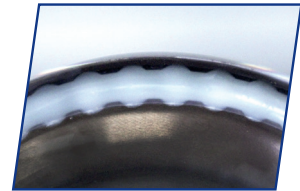


VISIBLE MAGNETS

The magnets can be held in place by an O-ring for easy inspection or be covered with a special resin that makes them totally immovable.



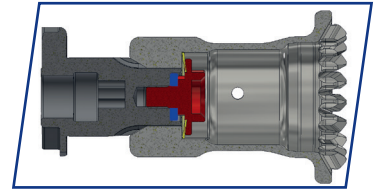
O-RING



SPECIAL RESIN

SPLINE DRIVE TECHNOLOGY

PATENTED PRODUCT

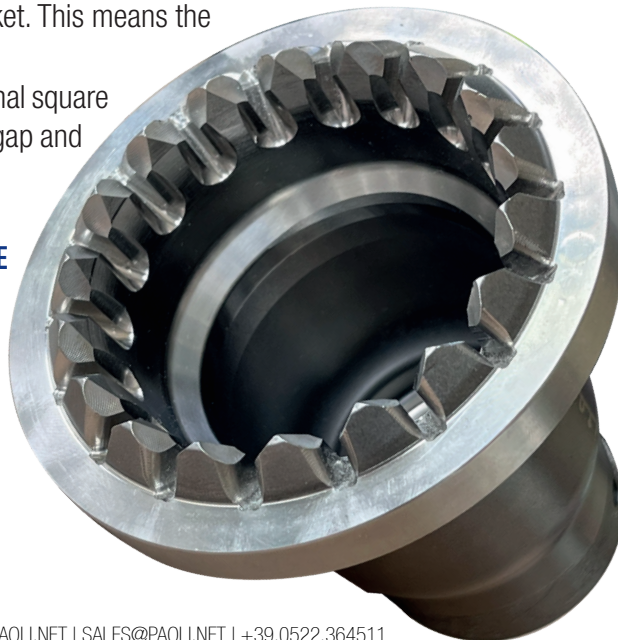


From **PAOLI'S EXPERIENCE** and its cutting edge sectorial engineering research a new technology is born: the **SPLINE DRIVE**. The work in R&D of the Paoli highly skilled technicians and the partnership with the most recognized racing teams has allowed the development of an innovative and greatly performing product. A spline drive wheel gun differs from a square drive tool mainly in the teeth that connect the anvil with the socket. This means the following advantages:

- More **EFFICIENT CONNECTION** than traditional square drive anvil thanks to the elimination of gap and vibrations
- More **DURABILITY** due to less wear
- More comfort and **SAFETY FOR THE OPERATOR** thanks to the removal of the pin

ANVIL-SOCKET FIXING SYSTEM!

The wheel nut socket is connected to the anvil by a cutting edge fixing screw system.



SOCKETS CONFIGURATOR

BEST PRACTICE	CODE	DRIVE	MATERIAL	STOCK	PAGE	BEST PRACTICE	CODE	DRIVE	MATERIAL	STOCK	PAGE
FERRARI F488/F296	B.28.0104	Spline	300M steel	In stock	85	MERCEDES A GT3	B.28.0133	Square 1"	Grade 5 titanium	In stock	92
	B.28.0106	Square 1"	300M steel	In stock	85		B.28.0137	Spline	Grade 5 titanium	In stock	92
	B.28.0107	Square 1"	Grade 5 titanium	In stock	86		B.28.0119	Square 1"	7075 aluminium alloy	On demand	99
	B.28.0090	Spline	Grade 5 titanium	In stock	86		MCLAREN 720 GT3/GT3 EVO/GTX	B.28.0157	Square 1"	Grade 5 titanium	In stock
	B.28.0136	Square 1"	7075 aluminium alloy	In stock	87	B.28.0149		Spline	Grade 5 titanium	In stock	93
	HURACAN GT3 & AUDI R8 GT3	B.28.0058	Square 1"	Grade 5 titanium	On demand	98	FORMULA E	B.28.0156	Spline	Grade 5 titanium	In stock
B.28.0108		Spline	Grade 5 titanium	In stock	87	SUPER FORMULA	B.28.0152	Spline	300M steel	In stock	94
B.28.0081		Spline	300M steel	In stock	88	INDYCAR	B.28.0080	Spline	Grade 5 titanium	In stock	96
B.28.0050	Square 1"	300M steel	In stock	88	B.28.0033		Square 1"	Grade 5 titanium	In stock	96	
B.28.0132	Spline	Grade 5 titanium	In stock	89	B.28.0161		Square 1"	Grade 5 titanium	In stock	95	
BMW M4 GT3	B.28.0131	Square 1"	Grade 5 titanium	In stock	89	FERRARI F488/F296 & FERRARI 599XX	B.28.0151	Spline	300M steel	On demand	98
	B.28.0153	Square 1"	300M steel	In stock	90	LAMBORGHINI HURACAN & AUDI RSR	B.28.0095	Square 1"	300M steel	On demand	99
	B.28.0139	Spline	Grade 5 titanium	In stock	90	ASTON MARTIN	B.28.0144	Spline	Grade 5 titanium	On demand	100
PORSCHE 991/992 GT3-R	B.28.0140	Square 1"	Grade 5 titanium	In stock	91						
	B.28.0052	Square 1"	7075 aluminium alloy	In stock	91						

IN STOCK

FERRARI



F488/F296

BEST PRACTICE → GT3 SERIES

CODE	B.28.0104
DRIVE	Paoli Spline
MATERIAL	300M steel
RETENTION SYSTEM	-
TEETH NUMBER	12

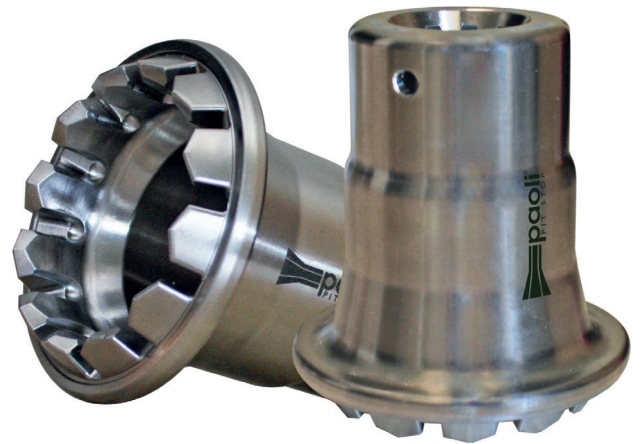


F488/F296

BEST PRACTICE → GT3 SERIES

CODE	B.28.0106
DRIVE	1"
MATERIAL	300M steel
RETENTION SYSTEM	-
TEETH NUMBER	12

FERRARI



F488/F296

BEST PRACTICE → GT3 SERIES

CODE	B.28.0107
DRIVE	1"
MATERIAL	Grade 5 titanium
RETENTION SYSTEM	-
TEETH NUMBER	12

F488/F296

BEST PRACTICE → GT3 SERIES

CODE	B.28.0090
DRIVE	Paoli Spline
MATERIAL	Grade 5 titanium
RETENTION SYSTEM	-
TEETH NUMBER	12

FERRARI

LAMBORGHINI - AUDI



F488/F296

BEST PRACTICE → FERRARI CHALLENGE

CODE	B.28.0136
DRIVE	1"
MATERIAL	7075 aluminium alloy
RETENTION SYSTEM	circlip
TEETH NUMBER	20

HURACAN GT3 / AUDI R8 GT3

BEST PRACTICE → GT3 SERIES

CODE	B.28.0108
DRIVE	Paoli Spline
MATERIAL	Grade 5 titanium
RETENTION SYSTEM	magnets
TEETH NUMBER	10

LAMBORGHINI - AUDI



HURACAN GT3 / AUDI R8 GT3

BEST PRACTICE → LAMBORGHINI GT3 SERIES

CODE	B.28.0081
DRIVE	Paoli Spline
MATERIAL	300M steel
RETENTION SYSTEM	magnets
TEETH NUMBER	10

HURACAN GT3 / AUDI R8 GT3

BEST PRACTICE → LAMBORGHINI GT3 SERIES

CODE	B.28.0050
DRIVE	1"
MATERIAL	300M steel
RETENTION SYSTEM	magnets
TEETH NUMBER	10

BMW

GHOST MAGNETS SOCKET



BMW M4 GT3

BEST PRACTICE → GT3 SERIES

CODE	B.28.0132
DRIVE	Paoli Spline
MATERIAL	Grade 5 titanium
RETENTION SYSTEM	ghost magnets
TEETH NUMBER	12

BMW M4 GT3

BEST PRACTICE → GT3 SERIES

CODE	B.28.0131
DRIVE	1"
MATERIAL	Grade 5 titanium
RETENTION SYSTEM	ghost magnets
TEETH NUMBER	12

BMW**NEW****GHOST MAGNETS SOCKET****BMW M4 GT3****BEST PRACTICE → GT3 SERIES**

CODE	B.28.0153
DRIVE	1"
MATERIAL	300M steel
RETENTION SYSTEM	ghost magnets
TEETH NUMBER	12

PORSCHE**GHOST MAGNETS SOCKET****PORSCHE 991/992 GT3-R****BEST PRACTICE → GT3 SERIES**

CODE	B.28.0139
DRIVE	Paoli Spline
MATERIAL	Grade 5 titanium
RETENTION SYSTEM	ghost magnets
TEETH NUMBER	18

PORSCHE**GHOST MAGNETS SOCKET****ALUMINIUM SOCKET:
ONLY FOR TORQUE
WRENCH APPLICATION****PORSCHE 991/992 GT3-R****BEST PRACTICE → GT3 SERIES**

CODE	B.28.0140
DRIVE	1"
MATERIAL	Grade 5 titanium
RETENTION SYSTEM	ghost magnets
TEETH NUMBER	18

PORSCHE 991/992 CUP**BEST PRACTICE → PORSCHE CUP**

CODE	B.28.0052
DRIVE	1"
MATERIAL	7075 aluminium alloy
RETENTION SYSTEM	O-ring
TEETH NUMBER	15

MERCEDES



MERCEDES AMG GT3

BEST PRACTICE → GT3 SERIES

CODE	B.28.0133
DRIVE	1"
MATERIAL	Grade 5 titanium
RETENTION SYSTEM	-
TEETH NUMBER	12

MERCEDES AMG GT3

BEST PRACTICE → GT3 SERIES

CODE	B.28.0137
DRIVE	Paoli Spline
MATERIAL	Grade 5 titanium
RETENTION SYSTEM	-
TEETH NUMBER	12

McLAREN

GHOST MAGNETS SOCKET



B.28.0157

B.28.0149

MCLAREN 720 GT3/GT3 EVO/GTX

BEST PRACTICE → GT3 SERIES

CODE	B.28.0157	B.28.0149
DRIVE	1"	Paoli Spline
MATERIAL	Grade 5 titanium	Grade 5 titanium
RETENTION SYSTEM	ghost magnets	ghost magnets
TEETH NUMBER	10	10



FORMULA E

NEW



SUPER FORMULA



FORMULA E

BEST PRACTICE → FORMULA E

CODE	B.28.0156
DRIVE	Paoli Spline
MATERIAL	Grade 5 titanium
RETENTION SYSTEM	circlip

SUPER FORMULA

BEST PRACTICE → SUPER FORMULA

CODE	B.28.0152
DRIVE	Paoli Spline
MATERIAL	300M steel
RETENTION SYSTEM	circlip

INDYCAR

NEW

GHOST MAGNETS SOCKET



INDYCAR

BEST PRACTICE → INDYCAR

CODE	B.28.0161
DRIVE	1"
MATERIAL	Grade 5 titanium
RETENTION SYSTEM	ghost magnets and o-ring
TEETH NUMBER	20



INDYCAR



INDYCAR

BEST PRACTICE → INDYCAR

CODE	B.28.0080
DRIVE	Paoli Spline
MATERIAL	Grade 5 titanium
RETENTION SYSTEM	magnets and o-ring
TEETH NUMBER	20

INDYCAR

BEST PRACTICE → INDYCAR

CODE	B.28.0033
DRIVE	1"
MATERIAL	Grade 5 titanium
RETENTION SYSTEM	magnets and o-ring
TEETH NUMBER	20

ON DEMAND

FERRARI



F488/F296

BEST PRACTICE → GT3 SERIES

CODE	B.28.0058
DRIVE	1"
MATERIAL	Grade 5 titanium
RETENTION SYSTEM	-
TEETH NUMBER	24

F488/F296 & FERRARI 599XX

BEST PRACTICE → F488/F296 CHALLENGE & FERRARI 599XX

CODE	B.28.0151
DRIVE	Paoli Spline
MATERIAL	300M steel
RETENTION SYSTEM	clip
TEETH NUMBER	20

MERCEDES



MERCEDES AMG GT3

BEST PRACTICE → GT3 SERIES

CODE	B.28.0119
DRIVE	1"
MATERIAL	7075 aluminium alloy
RETENTION SYSTEM	-
TEETH NUMBER	24

LAMBORGHINI - AUDI

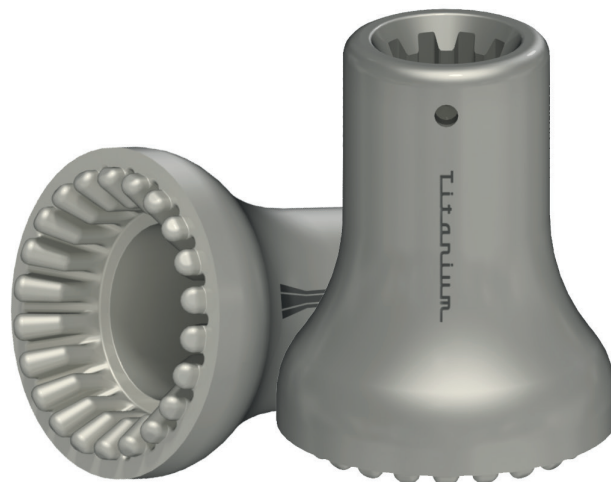


LAMBORGHINI HURACAN & AUDI RSR

BEST PRACTICE → GT3 SERIES

CODE	B.28.0095
DRIVE	1"
MATERIAL	300M steel
RETENTION SYSTEM	magnets
TEETH NUMBER	10

ASTON MARTIN



ASTON MARTIN

BEST PRACTICE → GT3 SERIES

CODE	B.28.0144
DRIVE	Paoli Spline
MATERIAL	Grade 5 titanium
RETENTION SYSTEM	-
TEETH NUMBER	22

SPLINE SOCKETS SERVICE KIT



CODE: B.23.0222

The kit includes:

- 1 adjustable hook wrench with round pin
- 3 disc springs
- 3 self-locking washers
- 1 axial retaining screw

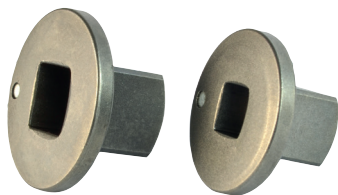
CODE: B.23.0243

The kit includes:

- 3 disc springs
- 3 self-locking washers
- 1 axial retaining screw



INSERT ADAPTERS



Recommended just for garage use. With this compact insert adapter to a bigger square drive the overall length is reduced to an absolute minimum. The insert adapter sticks to the socket by means of a magnet.

CODE	WHEEL GUN	SOCKETS
B.29.0001	1/2"	3/4"
B.29.0002	3/4"	1"

SOCKET RINGS, RETAINERS & SEEGER



WARNING!

Always ensure the correct installation of the retainer to avoid the risks of working with a loose socket!

CODE	RINGS	RETAINERS	SEEGER
B.28.0052			
B.28.0058			
B.28.0033			
B.28.0095			
B.28.0106			
B.28.0107			
B.28.0034			
B.28.0119			
B.28.0050	B.30.02.0004	B.30.01.0014	D.09.08.0043
B.28.0136			
B.28.0143			
B.28.0153			
B.28.0140			
B.28.0131			
B.28.0133			
B.28.0157			
B.28.0051			

IN STOCK

FERRARI



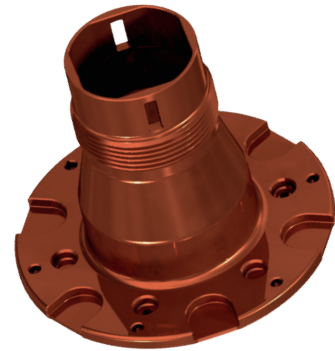
COMPATIBLE WITH F488/F296

CODE	VERSION	DESCRIPTION
B.32.0030	LH - aerospace steel	with slots
B.32.0031	RH - aerospace steel	with slots

ON DEMAND WE ARE ABLE TO PRODUCE AND SUPPLY MORE WHEEL NUTS FOR DIFFERENT SPECIFIC NEEDS

PAOLI WHEEL HUBS

Thanks to years of experience in the production of motor-sport wheel guns, sockets and nuts, Dino Paoli S.R.L. is finally ready to add wheel hubs to its product offering. The expansion of our manufacturing capabilities, the dedication of our workers and the knowledge gained over the years by our team of engineers alongside major racing teams has made us ready to take on any engineering challenge.



CONTACT US!
OUR TEAM WILL BE AT YOUR SERVICE

PAOLI WHEEL NUTS

Paoli is not only the go to for wheel guns: from the experience gained on the field and the internal engineering research, a new complete racing parts supply service is born. The R&D work of our highly qualified technicians, the cooperation with some of the most famous racing teams, and our 50 years long experience as wheel gun constructors make us experts in the field of forces applied to the **WHEEL NUTS** and in knowing how to manage them in order to improve **TOUGHNESS**, **DURABILITY** and **RELIABILITY** of the products. We look at the system of wheel gun, socket, nut, and wheel hub as a whole to be optimised together in order to achieve a **FAST** and **SAFE PIT STOP**.

